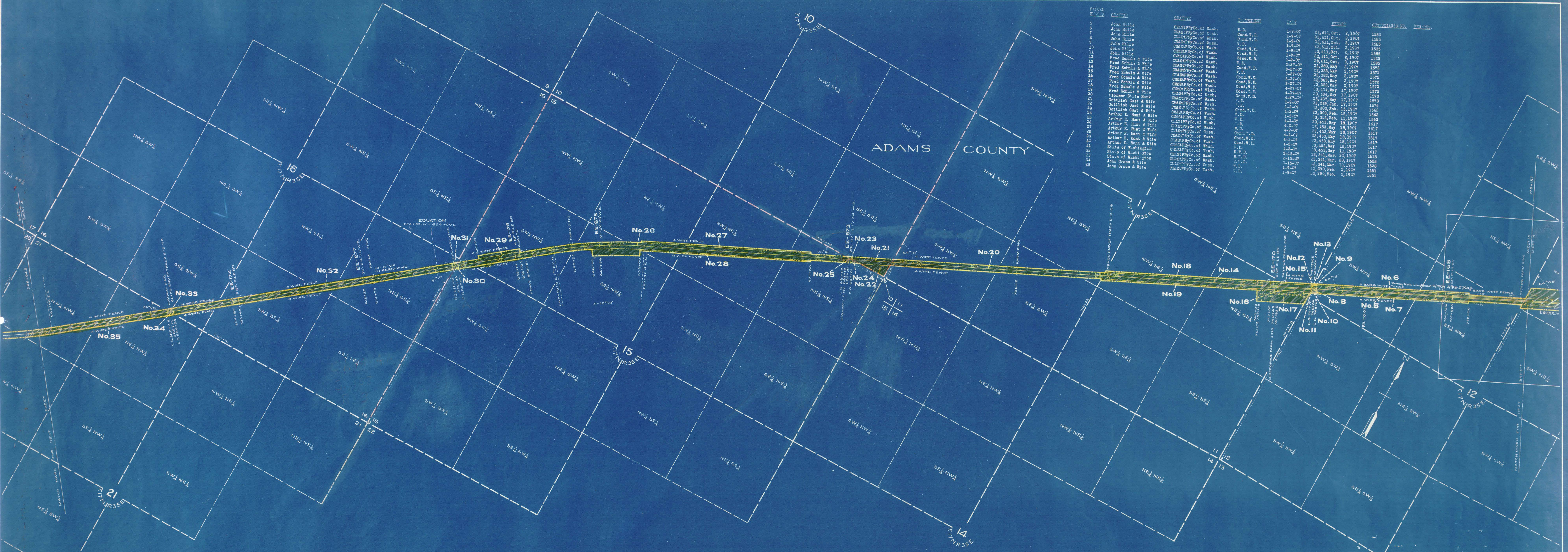


ADAMS COUNTY

PLAT NUMBER	GRANTEE	GRANTEE	INSTRUMENT	DATE	RECORDED	QUAD	SECTION
5	John Hill	CM&STP Co. of Wash.	F. D.	1-3-07	23, 611, Oct.	2, 1907	1585
6	John Hill	CM&STP Co. of Wash.	Cond. F. D.	1-9-07	23, 611, Oct.	2, 1907	1585
7	John Hill	CM&STP Co. of Wash.	Cond. F. D.	1-9-07	23, 611, Oct.	2, 1907	1585
8	John Hill	CM&STP Co. of Wash.	F. D.	1-9-07	23, 611, Oct.	2, 1907	1585
9	John Hill	CM&STP Co. of Wash.	Cond. F. D.	1-9-07	23, 611, Oct.	2, 1907	1585
10	John Hill	CM&STP Co. of Wash.	Cond. F. D.	1-9-07	23, 611, Oct.	2, 1907	1585
11	John Hill	CM&STP Co. of Wash.	Cond. F. D.	1-9-07	23, 611, Oct.	2, 1907	1585
12	Fred Schmit & Wife	CM&STP Co. of Wash.	F. D.	1-9-07	23, 611, Oct.	2, 1907	1585
13	Fred Schmit & Wife	CM&STP Co. of Wash.	Cond. F. D.	1-9-07	23, 611, Oct.	2, 1907	1585
14	Fred Schmit & Wife	CM&STP Co. of Wash.	Cond. F. D.	1-9-07	23, 611, Oct.	2, 1907	1585
15	Fred Schmit & Wife	CM&STP Co. of Wash.	F. D.	1-9-07	23, 611, Oct.	2, 1907	1585
16	Fred Schmit & Wife	CM&STP Co. of Wash.	Cond. F. D.	1-9-07	23, 611, Oct.	2, 1907	1585
17	Fred Schmit & Wife	CM&STP Co. of Wash.	Cond. F. D.	1-9-07	23, 611, Oct.	2, 1907	1585
18	Fred Schmit & Wife	CM&STP Co. of Wash.	Cond. F. D.	1-9-07	23, 611, Oct.	2, 1907	1585
19	Fred Schmit & Wife	CM&STP Co. of Wash.	Cond. F. D.	1-9-07	23, 611, Oct.	2, 1907	1585
20	Pioneer State Bank	CM&STP Co. of Wash.	Cond. F. D.	4-27-07	23, 434, May	2, 1907	1573
21	Ottlieb Gust & Wife	CM&STP Co. of Wash.	F. D.	4-27-07	23, 434, May	2, 1907	1573
22	Ottlieb Gust & Wife	CM&STP Co. of Wash.	F. D.	1-9-07	23, 239, Jan.	17, 1907	1576
23	Ottlieb Gust & Wife	CM&STP Co. of Wash.	Cond. F. D.	1-2-07	23, 453, May	18, 1907	1565
24	Arthur E. Hunt & Wife	CM&STP Co. of Wash.	F. D.	1-2-07	23, 453, May	18, 1907	1565
25	Arthur E. Hunt & Wife	CM&STP Co. of Wash.	F. D.	1-2-07	23, 453, May	18, 1907	1565
26	Arthur E. Hunt & Wife	CM&STP Co. of Wash.	F. D.	4-2-07	23, 453, May	18, 1907	1577
27	Arthur E. Hunt & Wife	CM&STP Co. of Wash.	F. D.	4-2-07	23, 453, May	18, 1907	1577
28	Arthur E. Hunt & Wife	CM&STP Co. of Wash.	F. D.	4-2-07	23, 453, May	18, 1907	1577
29	Arthur E. Hunt & Wife	CM&STP Co. of Wash.	Cond. F. D.	4-2-07	23, 453, May	18, 1907	1577
30	Arthur E. Hunt & Wife	CM&STP Co. of Wash.	Cond. F. D.	4-2-07	23, 453, May	18, 1907	1577
31	State of Washington	CM&STP Co. of Wash.	H. W. D.	4-2-07	23, 453, May	18, 1907	1577
32	State of Washington	CM&STP Co. of Wash.	H. W. D.	4-2-07	23, 453, May	18, 1907	1577
33	John Gross & Wife	CM&STP Co. of Wash.	H. W. D.	2-15-07	23, 341, Mar.	20, 1907	1588
34	John Gross & Wife	CM&STP Co. of Wash.	H. W. D.	1-15-07	23, 341, Mar.	20, 1907	1588
35	John Gross & Wife	CM&STP Co. of Wash.	F. D.	1-9-07	23, 290, Feb.	2, 1907	1591



RIGHT OF WAY AND TRACK MAP CHICAGO, MILWAUKEE & ST. PAUL RY. CO.

OPERATED BY THE
CHICAGO, MILWAUKEE & ST. PAUL RY. CO.
COLUMBIA DIVISION
STATION 778+15.7 TO STATION 566+94.8

Sheet No. 15 of 22 sheets of C. M. & St. P. Ry. Co. Main Line
from survey station 778+15.7 to survey station 566+94.8
A. E. Lodge
Valuation Engineer

SCALE: 1" = 400 FT.
JUNE 30, 1918.
OFFICE OF VALUATION ENGINEER
CHICAGO, ILLINOIS.



ADAMS